

1 foot scale on drawing border

Distance from reference station:

0.0 28.0 42.5 59.375 77.75 83.0 96.75 106.375 134.5 165.495 197.526 229.62 244.0 255.96 265.25

Thrust line

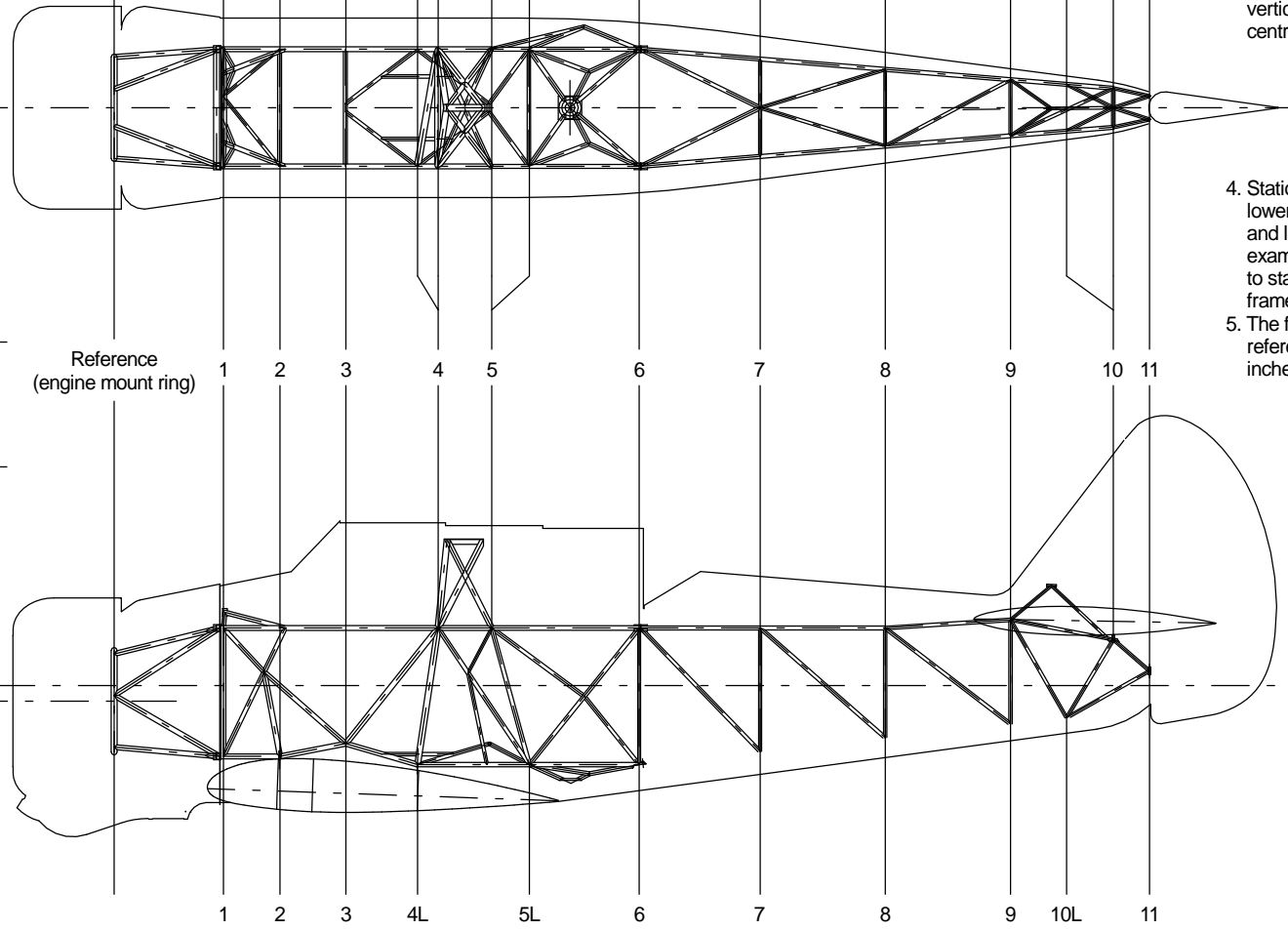
Station number:

Reference (engine mount ring) 1 2 3 4 5 6 7 8 9 10 11

Fuselage centre line

Thrust line

4.0

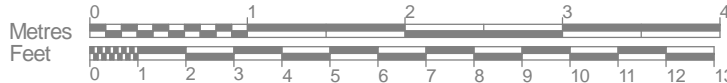


Notes:

1. There are 11 stations for the Wirraway fuselage. They mostly correspond to the centres of vertical framework tubes (except station 3).
2. The reference station (or zero station) corresponds to the vertical centre-plane of the engine mounting ring.
3. Stations 2, 4, 5 and 10 are offset from vertical to align with the respective tube centre-lines.
4. Stations are also divided into upper and lower sections, corresponding to the upper and lower tubes of the side frames. For example, station 4U (4 upper) corresponds to station 4 at the upper tube in the side frame.
5. The fuselage centre-line (or fuselage reference line) is positioned 4 inches above and parallel to the thrust line.

References:

1. RAAF publication no. A7282 Wirraway stations diagram
2. Wirraway Overhaul and Repair manual, RAAF Publication No. 76, Commonwealth Aircraft Corporation November 1940
3. Wirraway, Boomerang and CA-15 in Australian Service; Wilson, Stuart; Aerospace Publications Pty. Ltd., 1991; ISBN 0958797889



All dimensions in inches
All dimensions to tube centres unless noted otherwise